

GENERAL
CATALOGUE

**MARJAN
TILE**

2019 - 2020



MARJAN TILE

General Catalogue 2019-2020



INNOVATION



ARCHITECTURE



BEAUTY AND DURABILITY



ABOUT US



شرکت کاشی مرجان با بیش از سی سال تجربه در صنعت تولید پوشش های سرامیکی توانسته است با بکارگیری پیشرفته ترین و مدرن ترین ماشین آلات صنعت کاشی و سرامیک ، نوآوری های جدیدی در این صنعت داشته باشد و در این راستا مفتخر به تولید :

- کاشی های پرسلان (بدنه سفید) به صورت مات ، پولیش و نیمه پولیش
- کاشی های دکوراتیو و لوکس
- کاشی های صنعتی از جمله ضد اسید صنعتی ، ضد قلیا صنعتی و ضد لغزندگی (Anti Slip)
- کاشی های با قابلیت عبور نور

با سایزهای متنوع و مطابق با استاندارد ISO 13006 می باشد

بر اساس استاندارد مذکور، محصولات این شرکت علاوه بر کاربری در فضاهای داخلی و خارجی ساختمان ها می تواند در فضاهای صنعتی و تجاری مانند کارخانه ها، بیمارستان ها، آزمایشگاه ها، محوطه های باز، کارگاه ها و مراکز اداری نیز مورد استفاده قرار گیرد .

در حال حاضر تولیدات این شرکت به دلیل کیفیت بالا، به بسیاری از کشورهای اروپایی و آسیایی صادر می گردد.

Marjan Tile Co., with more than 30 years of experience in manufacturing ceramic coatings, using the most advanced and modern machineries in this field , has succeeded to be a very innovative company, and is proud to produce:

- Porcelain tiles in matte, polished and semi- polished finishes
- Luxury decorative tiles
- Industrial tiles including industrial Acid Resistant tiles , Alkali Resistant tiles , Anti Slip tiles
- Translucent tiles with light transmission property

These products are made in accordance with the International ISO 13006 standard in varying sizes.

According to the a.m. standard, these products can be used indoor and outdoor , in all residential, commercial, and industrial applications, such as factories, hospitals, laboratories, workshops and offices.

Thanks to the high quality of the products, they are already exported to many European and Asian countries.



SYMBOL



ICON	شرح Description	کلاس سایش
------	--------------------	-----------

	مقاومت به سایش کم جهت محیط هایی با ترافیک سبک Floorings subject to light traffic and laid in areas protected from abrasive and scratching agents such as sand, gravel, etc. In general, these tiles may be laid in bedrooms, bathrooms and private dwellings.	Class I (P.E.I I)
	مقاومت به سایش عادی جهت محیط هایی با ترافیک عادی Floorings exposed to medium-light traffic and laid in areas protected from abrasive and scratching agents, such as sand, gravel, etc. In general, these tiles may be laid anywhere in private dwellings, except kitchens.	Class II (P.E.I II)
	مقاومت به سایش بالا جهت محیط هایی با ترافیک نیمه سنگین Floorings exposed to medium traffic and laid in areas protected from abrasive and scratching agents, such as sand, gravel, etc. In general, these tiles may be laid anywhere in private dwellings and also in commercial type areas with light traffic.	Class III (P.E.I III)
	مقاومت به سایش بسیار بالا جهت محیط هایی با ترافیک سنگین Floorings exposed to medium-heavy traffic and laid in areas protected from abrasive and scratching agents, such as sand, gravel, etc. In general, these tiles may be laid in restaurants, hotels, shops, schools, offices, etc.	Class IV (P.E.I IV)

Icon	شرح آیکون	Description
------	-----------	-------------

	مقاوم در برابر یخ زدگی	Frost Resistant
	تک پخت	Single Fired
	مقاوم در برابر اسید	Acid Resistant
	چاپ دیجیتال	Digital Printing
	سطح براق	Polished Tile
	سطح نیمه براق	Semi Polished Tile
	ضد لغزندگی	Anti Slip
	نمایه نحوه نصب در پشت کاشی	Display Installation Method, Back Of Tile



12
STONE



72
WOOD

118
WALLPAPER



124
MOSAIC
MONO COLOR





82

ABSTRACT



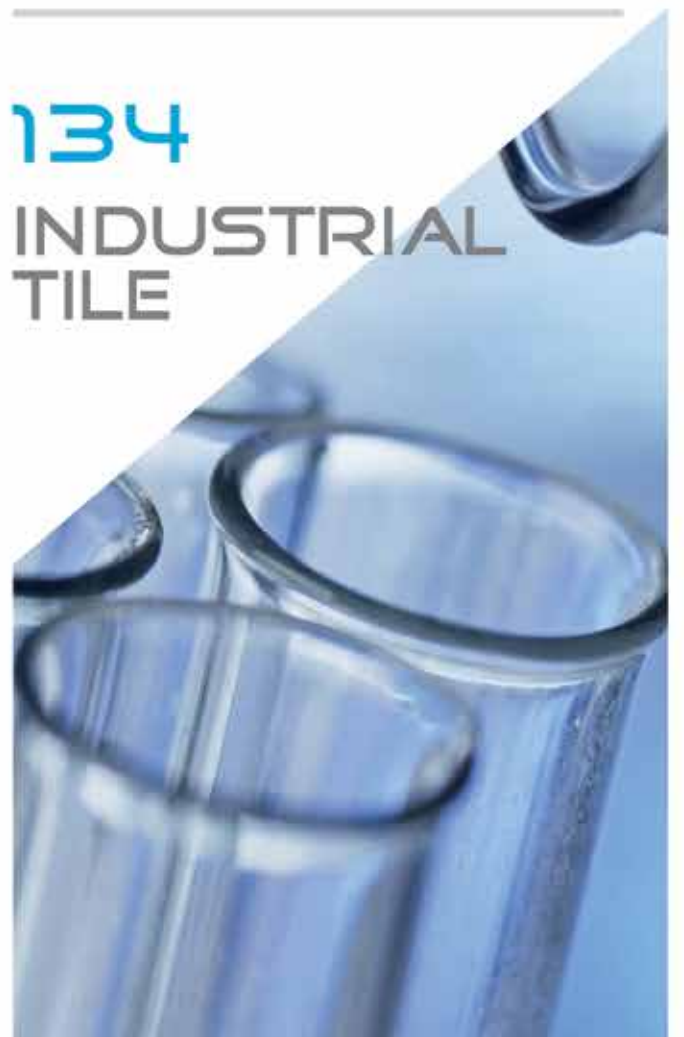
94

CEMENT



130

HEAVY
DUTY



134

INDUSTRIAL
TILE

INDEX

STONE

PRADA	12	ARTISTA	36	FIORDO	54
MURANO	13	ALABASTRO	38	NOBLE	55
EIMA	14	VERONA	40	KATHMANDU	56
URBAN	18	CROWN	44	OMEGA	60
SILKY	22	VISION	48	KAMELOT	62
SILVA	25	FLAVIA	49	BASALT	64
SAVANA	26	GRANADA	50	MALAGA	69
VALERIA	28	PACIFIC	52	CRYSTAL	70
				PETRA / DAVIN	71

WOOD

WOODEN RUG	74	AYAN	78	CUSTER	80
------------	----	------	----	--------	----

ABSTRACT

INCANTO	84	EXCLUSIVE	90	VINTAGE	93
---------	----	-----------	----	---------	----

CEMENT

EDINBURGH	96	ARANDA	100	MODENA	104
MOROCCAN	98	IRIS	102	KARANEH	110
				TIMELESS	115

WALLPAPER

DAMASK	120	ROYAL	122
--------	-----	-------	-----

MOSAIC/ MONO COLOR

SPORT	126	OCEAN	128
-------	-----	-------	-----

HEAVY DUTY

HARD STONE	132
------------	-----

INDUSTRIAL TILE

ACID RESISTANT	136	ANTI SLIP (ACID RESISTANT)	140	ALKALI RESISTANT	142
TECHNICAL SPECIFICATIONS	145	PACKING SPECIFICATIONS	147		







STONE

PRADA
MURANO
EIMA
URBAN
SILKY
SILVA
SAVANA
VALERIA
ARTISTA
ALABASTRO
VERONA
CROWN
VISION
FLAVIA
GRANADA
PACIFIC
FIORDO
NOBLE
KATHMANDU
OMEGA
KAMELOT
BASALT
MALAGA
CRYSTAL
PETRA
DAVIN





PRADA



60x120



8279 Prada Rust



8277 Prada Black

MURANO



60x120

STONE COLLECTION



7702 Murano Brown



7703 Murano Gray



7704 Murano Light Gray



7709 Murano Beige



EIMA

60x120



STONE COLLECTION



EIMA



60x120 , 60x60



7749 Eima Light Gray



7750 Eima Dark Gray



EIMA



60x120 , 60x60

STONE COLLECTION



7749 Eima Light Gray



7750 Eima Dark Gray





URBAN



30x90 , 30x30



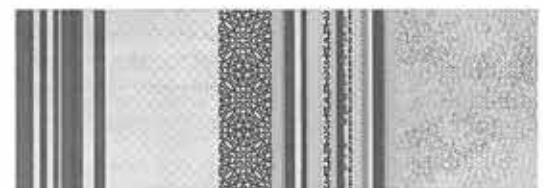
6634 Urban Light Gray



6636 Urban Decor



6635 Urban Dark Gray



0276 Ottawa Decor



0136

URBAN



30x90 , 30x30



6637 Urban Beige



6638 Urban Brown



0137



6639 Urban Decor



0275 Ottawa Decor

STONE COLLECTION



URBAN 30x90





WC

STONE COLLECTION



SILKY



30x90 , 30x30



7223 Silky Light Blue



0244 Decor



7224 Silky Dark Blue



7223 Silky Light Blue

SILKY



30x90 , 30x30



7225 Silky Light Gray



7253 Silky Relief Light Gray



7226 Silky Dark Gray



7254 Silky Relief Dark Gray



7225 Silky Light Gray



STONE COLLECTION





SILKY



30x90 , 30x30



7227 Silky Light Beige



7227 Silky Light Beige



7255 Silky Relief Light Beige

SILVA



60x120

STONE COLLECTION



8068 Silva White



8069 Silva White





SAVANA



30x90 , 30x30



7731 Savana Light Gray



0234 Levi Decor



7733 Savana Decor



7731 Savana Light Gray

SAVANA



30x90 , 30x30

STONE COLLECTION



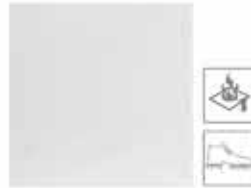
7730 Savana White



0234 Levi Decor



7732 Savana Decor



7730 Savana White





VALERIA



60x120



8077 Valeria Light Gray



8078 Valeria Gray



8080 Valeria Light Gray



8081 Valeria Gray

VALERIA



60x120



8078 Valeria Gray



VALERIA 60x120 , 60x60



STONE COLLECTION





VALERIA



60x60



8077 Valeria Light Gray



8078 Valeria Gray



VALERIA



60x120, 30x30

STONE COLLECTION



8077 Valeria Light Gray



0134



8078 Valeria Gray



0135



VALERIA

60x120 , 60x60

EXIT







ARTISTA



30x60



7008 Artista Olive



0285 Artista Decor



7009 Artista Beige



0287 Artista Decor

ARTISTA



30x60

STONE COLLECTION



7010 Artista Gray



0286 Artista Decor





ALABASTRO



30x60 , 30x30



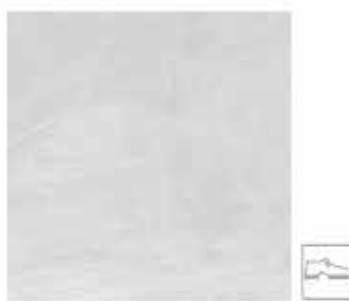
7198 Alabastro Light Gray



7199 Alabastro Gray



7196 Alabastro Decor



7198 Alabastro Light Gray

ALABASTRO



30x60 , 30x30

STONE COLLECTION



7200 Alabastro Beige



7201 Alabastro Brown



7197 Alabastro Decor



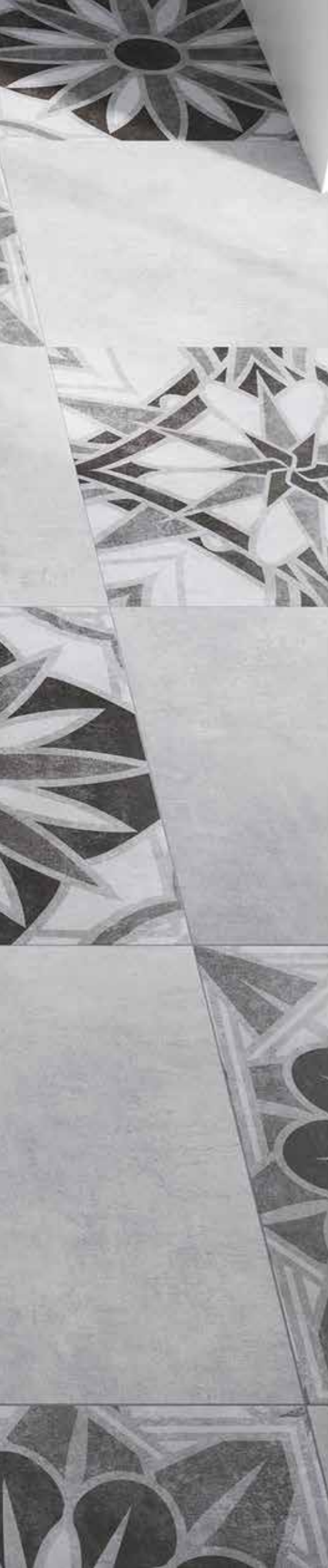
7200 Alabastro Beige



VERONA

60x60





6606 Verona Light Gray



6608 Verona Gray



6607 Verona Decor



6607 Verona Decor



6607 Verona Decor



6607 Verona Decor



VERONA

60X60





6602 Verona Light Beige



6604 Verona Beige



6612 Verona Brown



6609 Verona Decor



6609 Verona Decor



6609 Verona Decor



6609 Verona Decor





CROWN



60x120



7705 Crown White



7700 Crown White



CROWN



30x90 , 30x30

STONE COLLECTION



7700 Crown White



7700 Crown White



7723 Crown Clavier White

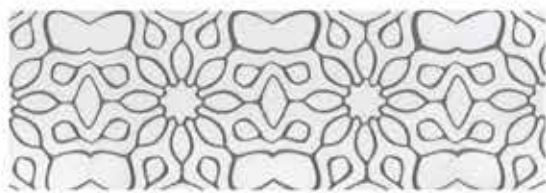




CROWN



30x90 , 30x30



0265 Crown Decor



7700 Crown White



7701 Crown Decor



0503

CROWN



30x90 , 30x30

STONE COLLECTION



7701 Crown Decor



7700 Crown White



7700 Crown White





VISION



60x120



8035 Vision Light Beige



8036 Vision Black



FLAVIA



60x120

STONE COLLECTION



8066 Flavia Beige





GRANADA



60x120



7141 Granada Light Beige



7142 Granada Beige



7144 Granada Brown



GRANADA



60x60

STONE COLLECTION



7141 Granada Light Beige



7142 Granada Beige





PACIFIC



60x120



7711 Pacific Bone



7712 Pacific Brown



PACIFIC



60x120

STONE COLLECTION



7713 Pacific Beige



7714 Pacific Ochre



7715 Pacific Tortilla





FIORDO



60x60



8050 Fiordo Bone



8052 Fiordo Light Beige

NOBLE



60x60

STONE COLLECTION



7100 Noble Bone



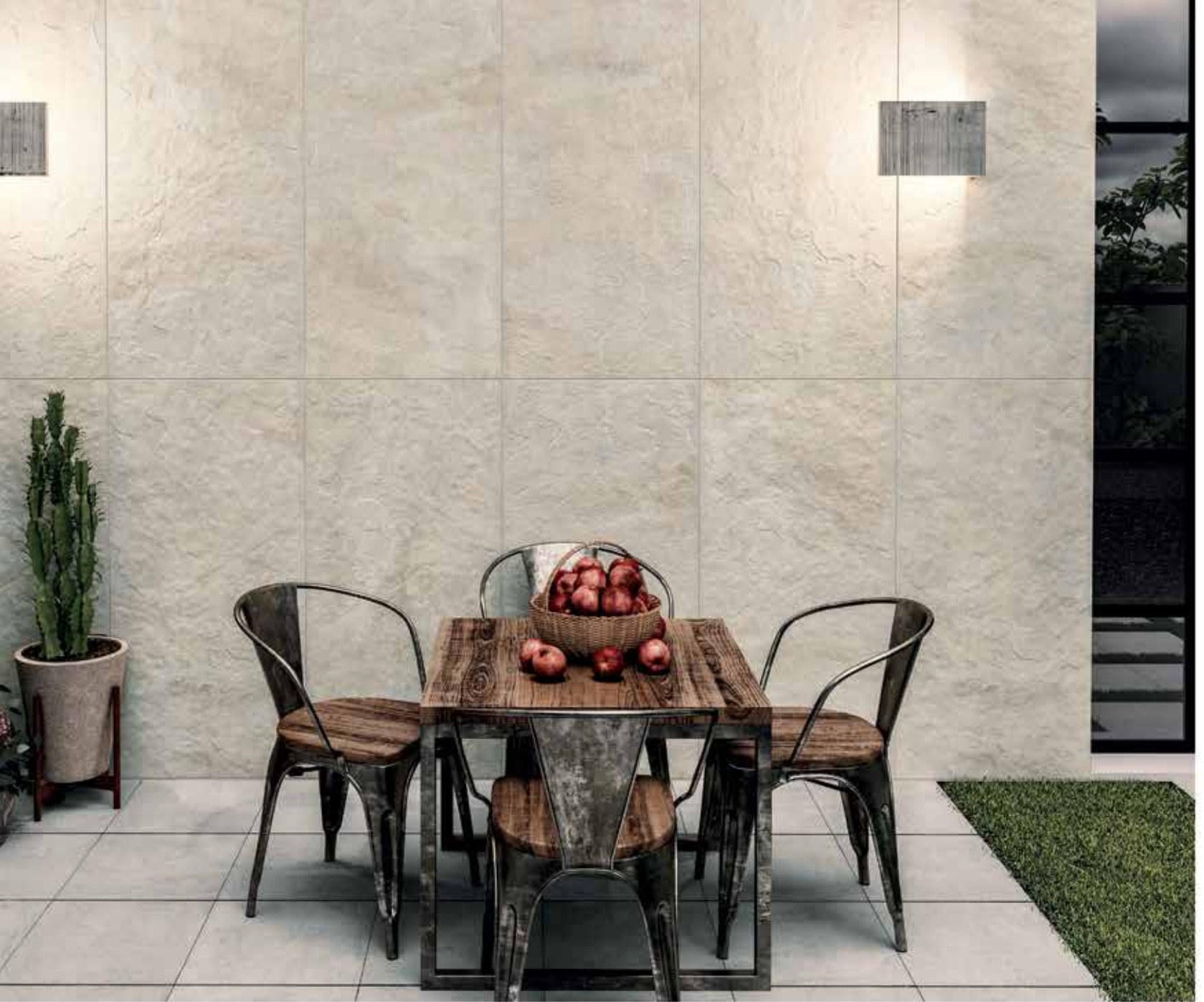
7101 Noble Light Beige



KATHMANDU 60x120







KATHMANDU



60x120



8263 Kathmandu Light Gray



8264 Kathmandu Medium Gray



8265 Kathmandu Gray



8266 Kathmandu Bone

KATHMANDU



60x120

STONE COLLECTION



8268 Kathmandu Light Beige



8269 Kathmandu Beige





OMEGA



60x60



6618 Omega Light Gray



6619 Omega Light Gray



6620 Omega Gray



6621 Omega Gray

OMEGA



60x60



6628 Omega Light Beige



6629 Omega Light Beige



6630 Omega Beige



6631 Omega Beige

STONE COLLECTION





KAMELOT



31x61



8512 Kamelot Light Beige



8513 Kamelot Beige



8515 Kamelot Dark Gray

KAMELOT



31x61

STONE COLLECTION



6754 Kamelot White



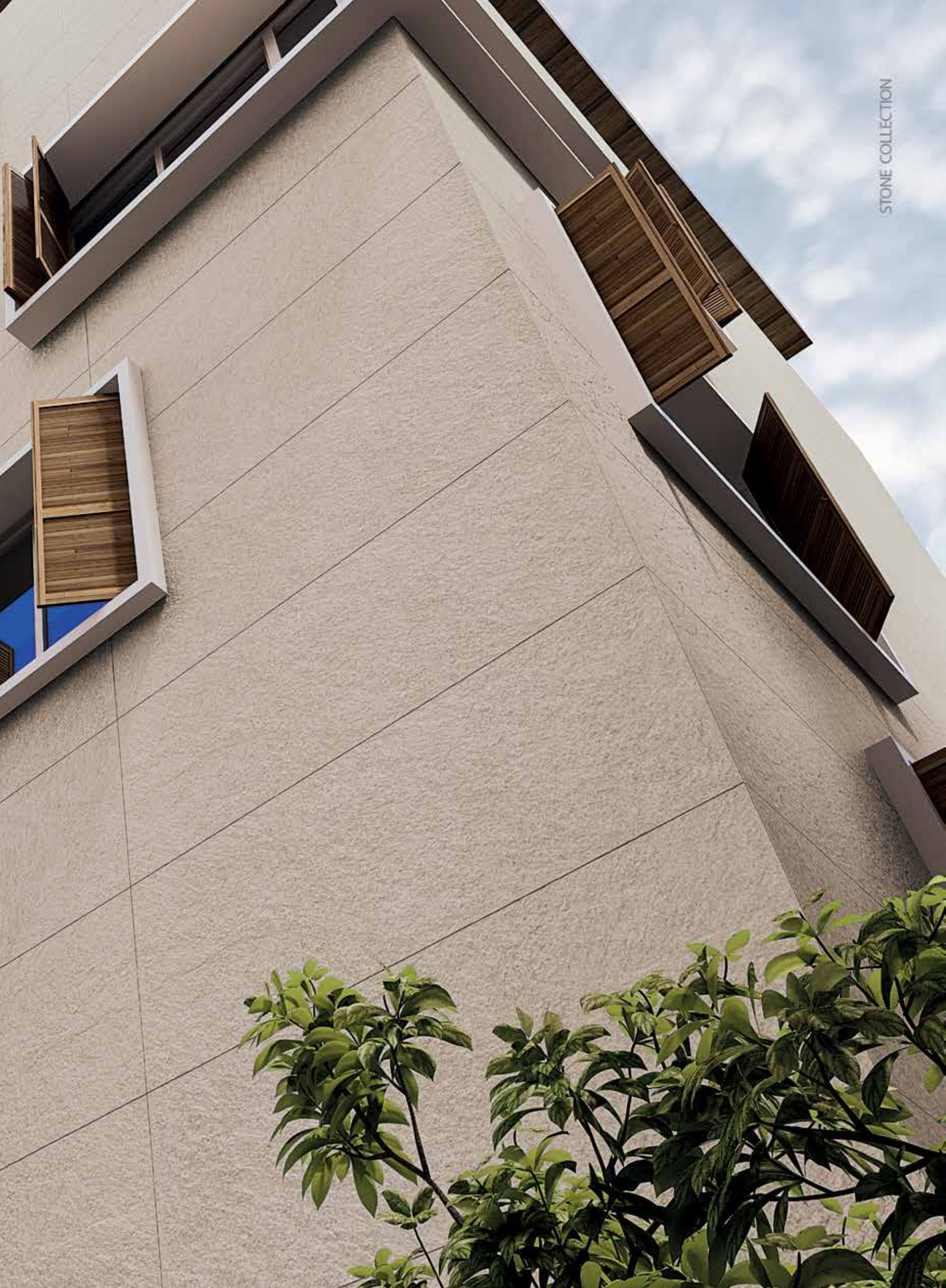
8514 Kamelot Light Gray



BASALT

60x120





STONE COLLECTION



BASALT



60x120



7721 Basalt Brown



7718 Basalt Beige



7719 Basalt Light Gray



7720 Basalt Gray



BASALT | GRANADA



60x120 , 30x30

STONE COLLECTION



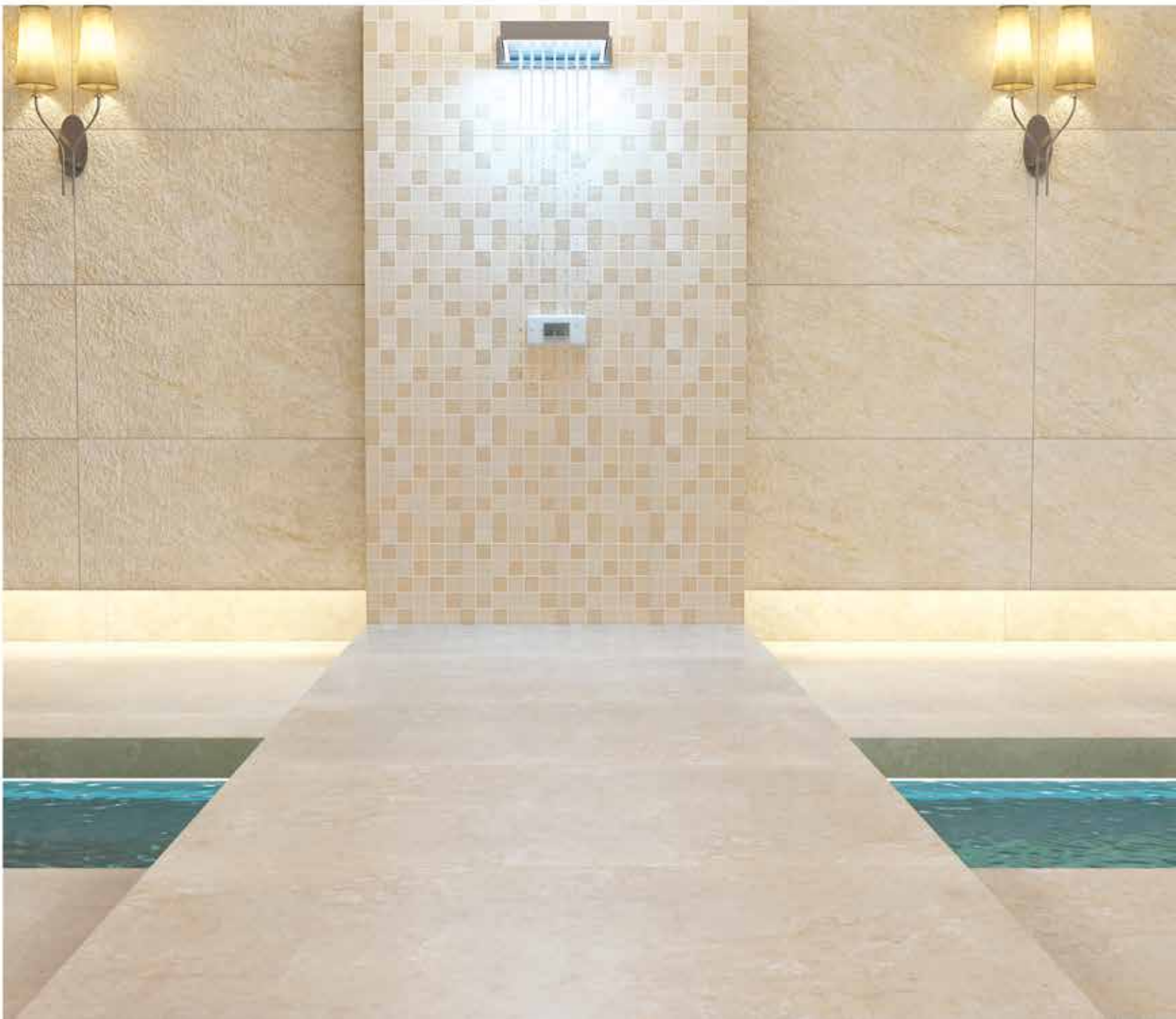
7717 Basalt Light Beige



7141 Granada Light Beige



0132





BASALT



30x60



7717 Basalt Light Beige



7718 Basalt Beige



7719 Basalt Light Gray



7720 Basalt Gray

MALAGA



30x60



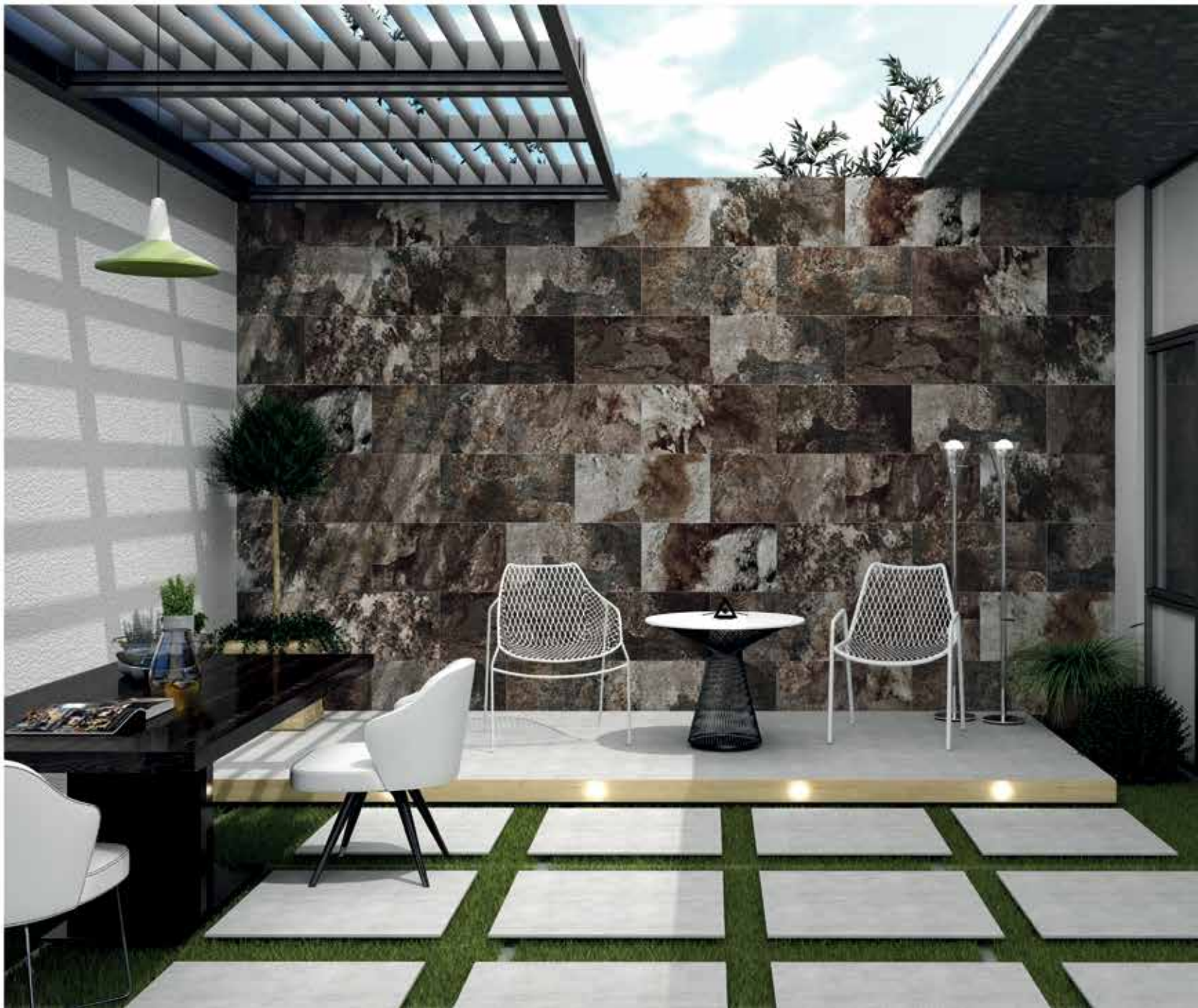
7193 Malaga Beige



7194 Malaga Gray



STONE COLLECTION





CRYSTAL



60x120



7707 Crystal White

Other Products

60x60



7139 Petra



7603 Davin







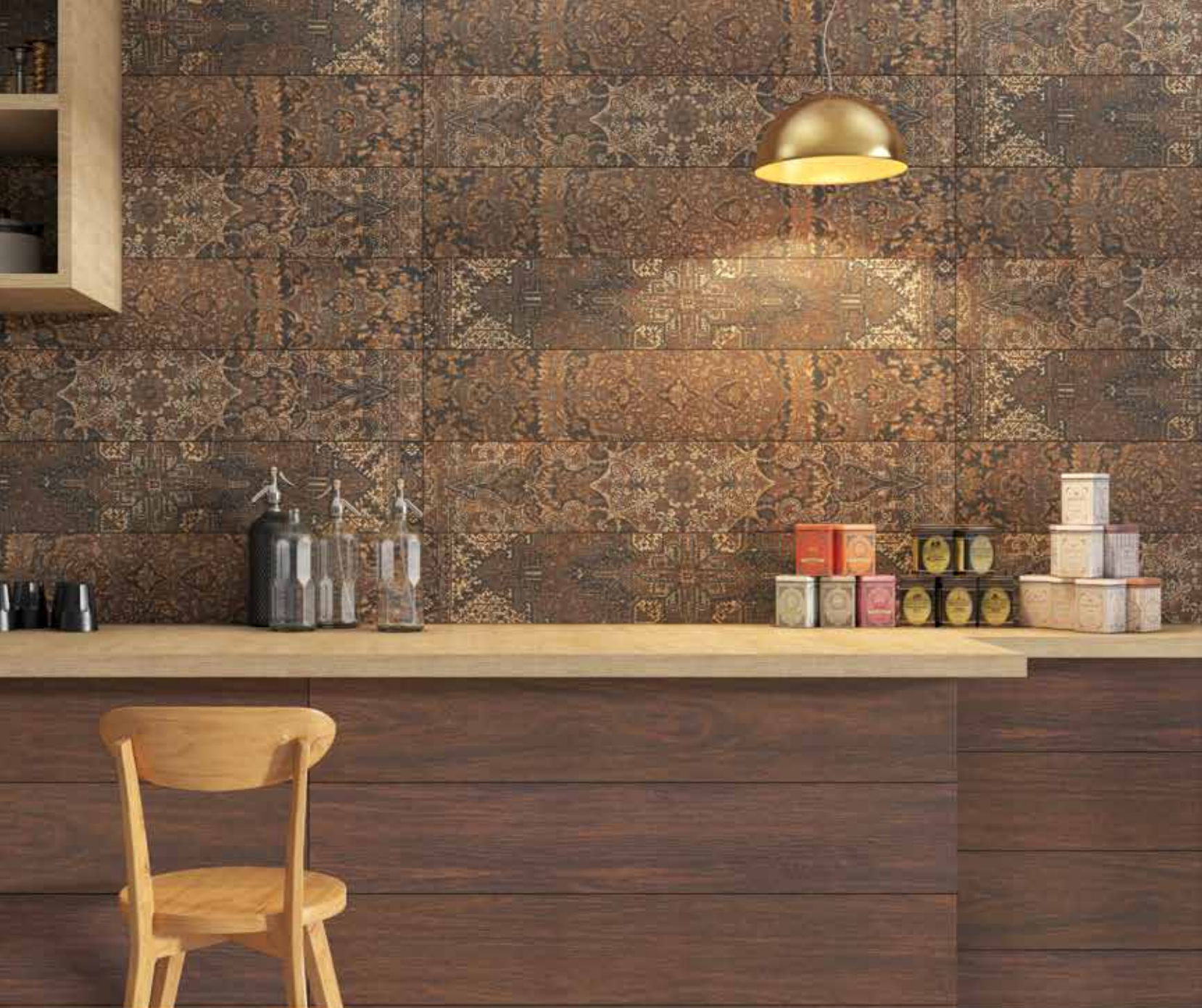
WOOD

WOODEN RUG
AYAN
CUSTER

WOODEN RUG 20x120







WOODEN RUG



20x120



8314 Wooden Rug Orange Brown



8315 Wooden Rug Mahogany



8316 Wooden Rug Dark Decor

WOODEN RUG



20x120

WOOD COLLECTION



8311 Wooden Rug Light Gray



8312 Wooden Rug Wenge



8313 Wooden Rug Light Decor





AYAN



20x120



8300 Ayan Silver



8301 Ayan Beige



8302 Ayan Latte

AYAN



20x120

WOOD COLLECTION



8303 Ayan Walnut



8304 Ayan Brown



CUSTER

20x120



CUSTER



20x120

WOOD COLLECTION



8256 Custer Brown



8257 Custer Walnut





The background features a vertical split. The left side is a dark blue gradient with glowing, curved light blue lines. The right side is a light grey gradient with a thin white curved line.

ABSTRACT

INCANTO
EXCLUSIVE
VINTAGE



INCANTO



60x120



8071 Incanto Blue

INCANTO



60x120

ABSTRACT COLLECTION



8070 Incanto Gray



INCANTO

60X60





INCANTO



60x120



8074 Incanto Blue



8073 Incanto Gray



8075 Incanto Antrasit

INCANTO



60x60

ABSTRACT COLLECTION



8075 Incanto Antrasit



8073 Incanto Gray



8074 Incanto Blue



EXCLUSIVE 30x30







EXCLUSIVE



30x30



7169 Exclusive
Blue Beige



7169 Exclusive
Blue Beige



7169 Exclusive
Blue Beige



7169 Exclusive
Blue Beige

VINTAGE



30x90



7107 Vintage Blue



7107 Vintage Blue



7108 Vintage Beige



7108 Vintage Beige

ABSTRACT COLLECTION







CEMENT

EDINBURGH
MOROCCAN
ARANDA
IRIS
MODENA
KARANEH
TIMELESS



EDINBURGH



30x60 , 30x30



7094 Edinburgh Light Beige



7095 Edinburgh Decor



7097 Edinburgh Decor



7094 Edinburgh Light Beige

EDINBURGH



30x60 , 30x30

CEMENT COLLECTION



7092 Edinburgh Light Gray



7093 Edinburgh Decor



7096 Edinburgh Decor



7092 Edinburgh Light Gray





MOROCCAN



30x30



7172 Moroccan Gray



7174 Moroccan Decor



7174 Moroccan Decor



7174 Moroccan Decor

MOROCCAN



30x30

CEMENT COLLECTION



7171 Moroccan Beige



7173 Moroccan Decor



7173 Moroccan Decor



7173 Moroccan Decor





ARANDA



30x90 , 30x30



7180 Aranda Dark Blue



0281 Aranda Decor



7176 Aranda Light



0277 Aranda Decor



7176 Aranda Light



ARANDA



30x90 , 30x30



7182 Aranda Dark Gray



0283 Aranda Decor



7178 Aranda Light Gray



0279 Aranda Decor



7178 Aranda Light Gray

CEMENT COLLECTION



IRIS

30x90 , 30x30





0256 Iris Decor



7656 Iris Decor



7648 Iris Light Gray



7648 Iris Light Gray



MODENA

60x120





CEMENT COLLECTION





MODENA



30x120 , 30x30



7688 Modena Decor



7689 Modena Decor



7680 Modena Gray



7681 Modena Light Gray



7681 Modena Light Gray

MODENA



60x120

CEMENT COLLECTION



7681 Modena Light Gray



7680 Modena Gray



7689 Modena Decor





MODENA



60x120 , 30x120 , 30x30



7681 Modena Light Gray



0130

MODENA



60x60



7680 Modena Gray



7681 Modena Light Gray

CEMENT COLLECTION



KARANEH

60x120





CEMENT COLLECTION



KARANEH



60x120 , 30x60 , 30x30



8283 Karaneh Light Gray



8284 Karaneh Gray



0121



0122



0123

KARANEH



60x120

CEMENT COLLECTION



8280 Karaneh Bone



8281 Karaneh Light Beige



8282 Karaneh Medium Beige



8284 Karaneh Gray





KARANEH



60x60



8280 Karaneh Bone



8281 Karaneh Light Beige



8282 Karaneh Medium Beige



8283 Karaneh Light Gray



8284 Karaneh Gray

TIMELESS



60x120

CEMENT COLLECTION



8287 Timeless Light Gray



8288 Timeless Gray



8290 Timeless Antrasit



TIME LESS

60x120









WALLPAPER

DAMASK
ROYAL



DAMASK



30x90 , 30x30



7238 Damask Gray



7239 Damask Dark Gray



0273 Decor



7238 Damask Gray



DAMASK



30x90 , 30x30



7240 Damask Beige



7241 Damask Dark Beige

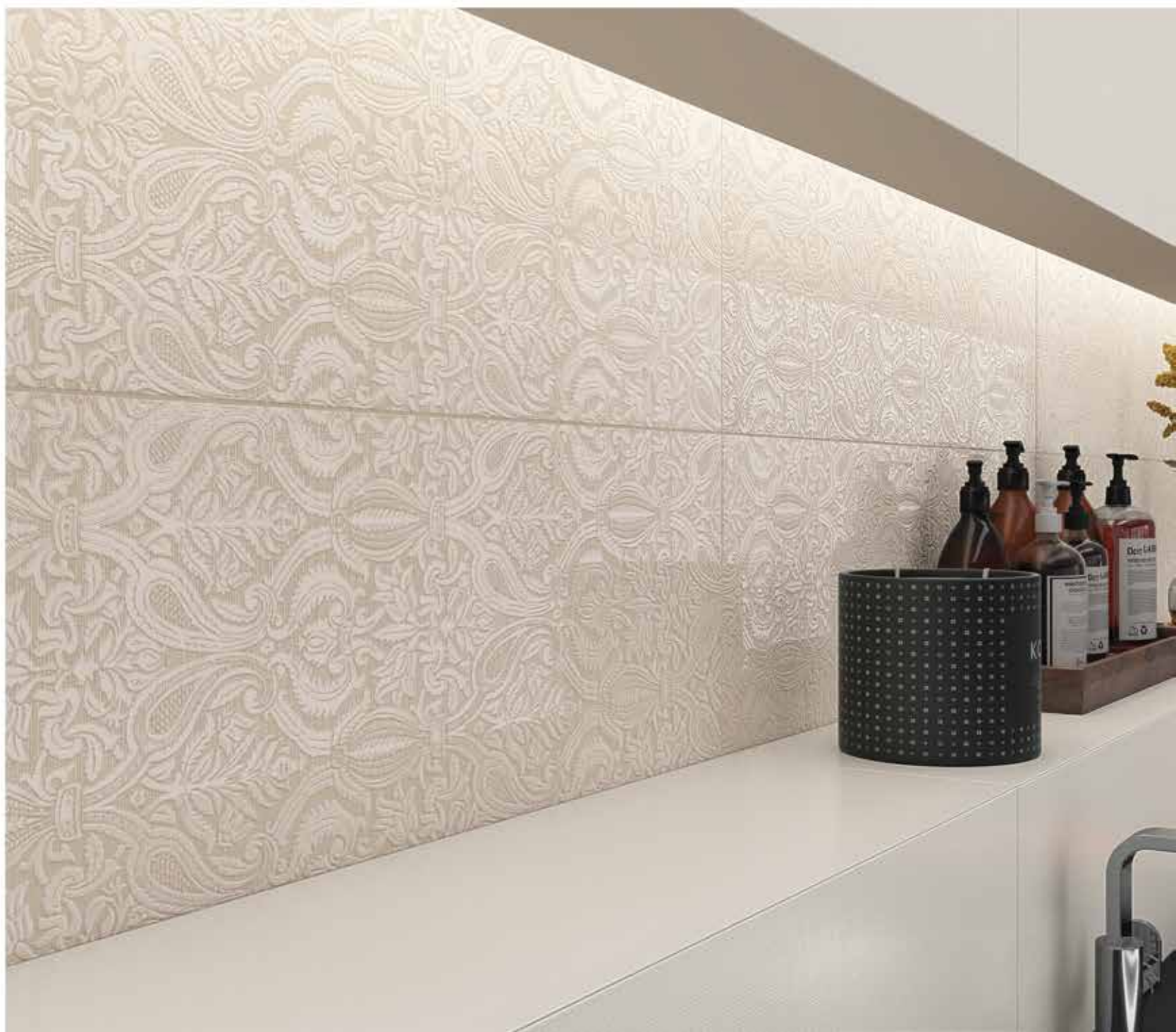


0274 Decor



7240 Damask Beige

WALLPAPER COLLECTION





ROYAL



30x90 , 30x30



7724 Royal Light Gray



7725 Royal Dark Gray



0270 Royal Decor



7724 Royal Light Gray

ROYAL



30x90 , 30x30



7726 Royal Beige



7727 Royal Brown

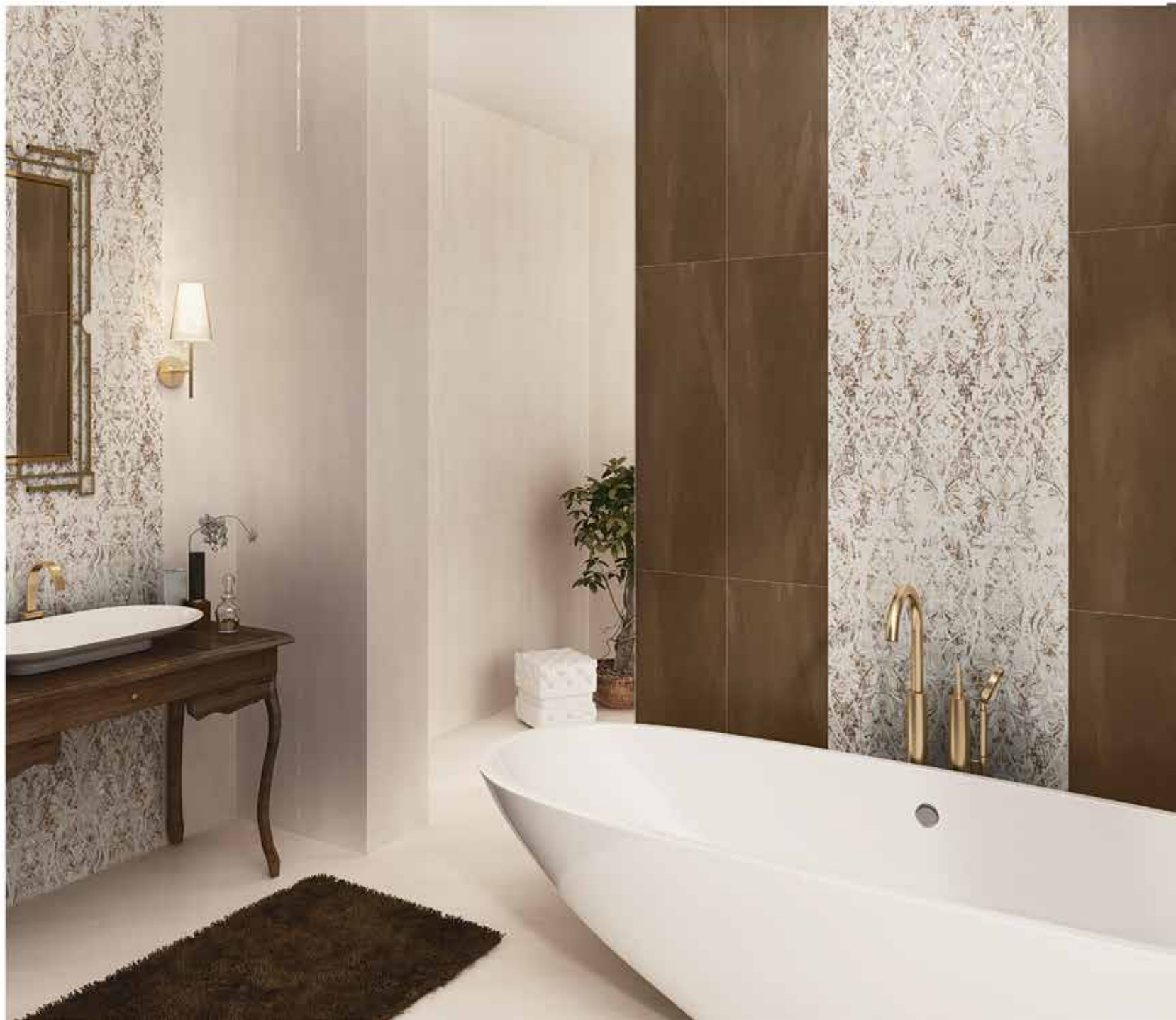


0271 Royal Decor



7726 Royal Beige

WALLPAPER COLLECTION







MOSAIC
MONO COLOR

SPORT
OCEAN



SPORT



20x20



6330 Sport Royal



6331 Sport Turkish



6348 Sport Plum

SPORT



20x20



6740 Sport White



6347 Sport Sky

MOSAIC / MONO COLOR COLLECTION





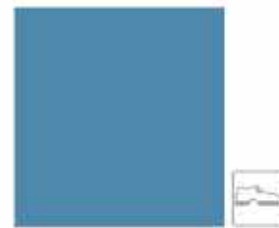
OCEAN



20x20



1162 Ocean Sky



1163 Ocean Carolina

OCEAN



20x20



1161 Ocean White



1164 Ocean Space







HEAVY DUTY

HARD STONE





HARD STONE



39X39



6173 Hard Stone Beige



6163 Hard Stone White

HARD STONE



39X39

HEAVY DUTY COLLECTION



6311 Hard Stone Light Gray



6312 Hard Stone Gray







INDUSTRIAL TILE

ACID RESISTANT
ANTI SLIP
ALKALI RESISTANT



ACID RESISTANT



33x33 , 30x30 , 25x25 , 20x20



1804 Acid Resistant



1806 Acid Resistant

ACID RESISTANT



25x25

INDUSTRIAL TILE COLLECTION



1821 Acid Resistant



1822 Acid Resistant





ACID RESISTANT



33X33



1823 Acid Resistant



1824 Acid Resistant

ACID RESISTANT



20x20

INDUSTRIAL TILE COLLECTION



1816 Acid Resistant



6701 Acid Resistant





ANTI SLIP (ACID RESISTANT)



30X30



1864 Anti Slip

ANTI SLIP (ACID RESISTANT)

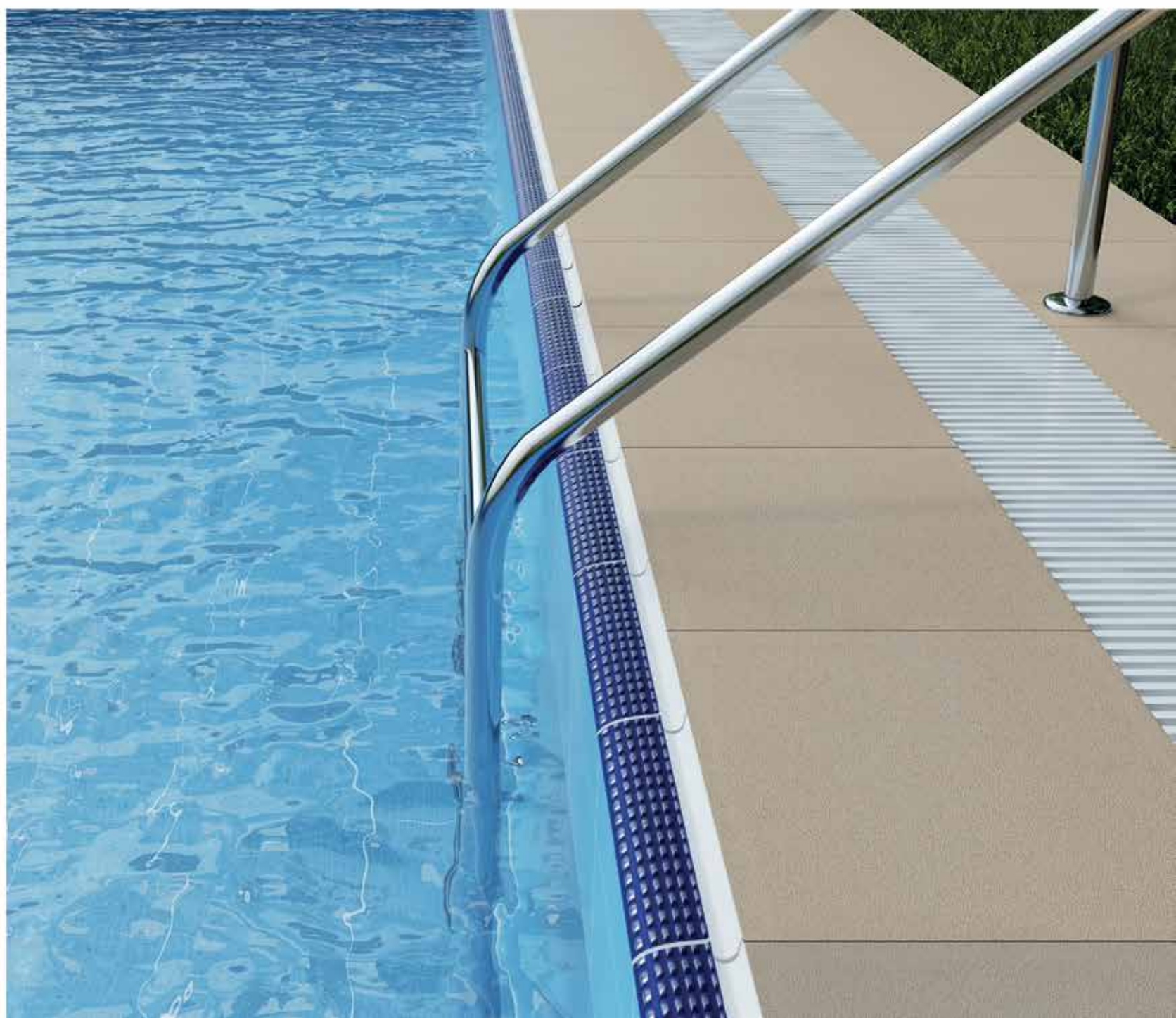


30X30



1864 Anti Slip

INDUSTRIAL TILE COLLECTION



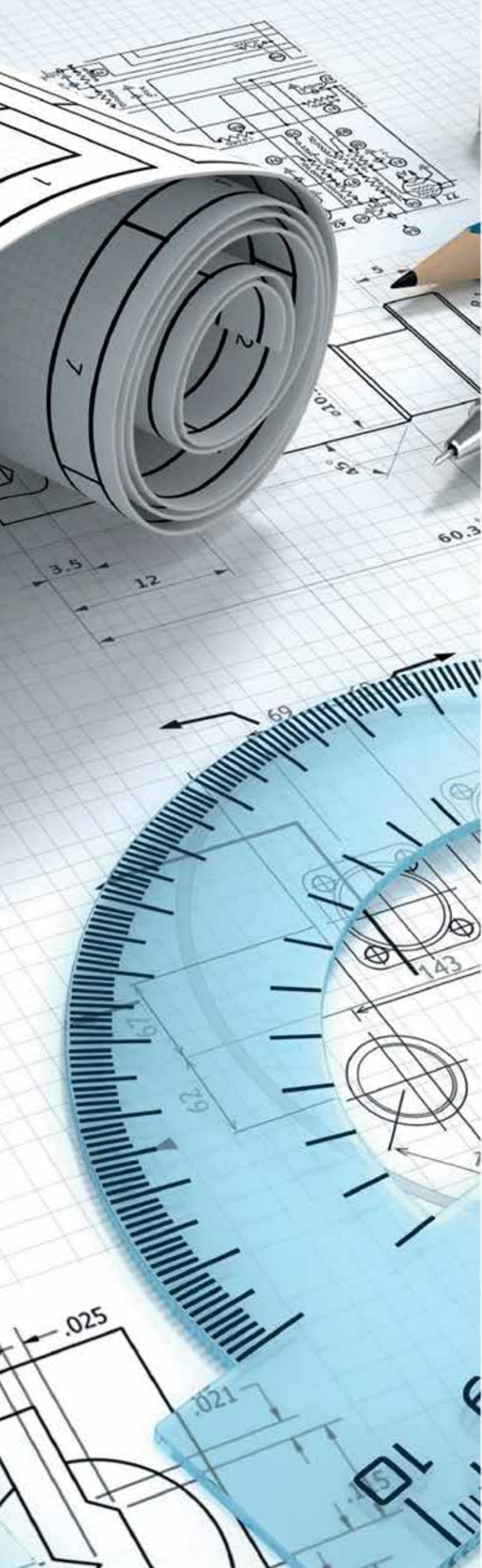
ALKALI RESISTANT 32x32





1993 Alkali Resistant





TECHNICAL & PACKING SPECIFICATIONS

WHITE BODY TILE SPECIFICATIONS (FIRST GRADE)

	SIZE 30x30 (Non Rectified)	SIZE 39x39 (Non Rectified)	SIZE 30x60 (Non Rectified)
LENGTH & WIDTH	Max ±0.7 mm	Max ±0.9 mm	Max ± 1 mm
THICKNESS	±4% of nominal thickness	±4% of nominal thickness	±4% of nominal thickness
RECTANGULARITY	Max 0.9 mm	Max 1.2 mm	Max 0.7 mm
STRAIGHTNESS OF SIDES	Max ±0.4 mm	Max ±0.5 mm	Max ±0.7 mm
SURFACE FLATNESS	Max ±0.6 mm	Max ±0.7 mm	Max ±0.8 mm
WATER ABSORPTION (Weight Percent)	Average ≤0.5%	Average ≤0.5%	Average ≤0.5%
MODULUS OF RUPTURE (N/mm ²) (BENDING STRENGTH)	Average ≥35 Min. 32	Average ≥45 Min. 40	Average ≥35 Min. 32
ABRASION RESISTANCE	II-IV According to ISO 10545-7	II-IV According to ISO 10545-7	II-IV According to ISO 10545-7
THERMAL SHOCK RESISTANCE	In compliance with the requirements of ISO 10545-9	In compliance with the requirements of ISO 10545-9	In compliance with the requirements of ISO 10545-9
THERMAL EXPANSION COEFFICIENT (0-100 ^o C)	Max. 5×10 ⁻⁶ (1/K)	Max. 5×10 ⁻⁶ (1/K)	Max. 5×10 ⁻⁶ (1/K)
CRAZING RESISTANCE	In compliance with the requirements of ISO 10545-11	In compliance with the requirements of ISO 10545-11	In compliance with the requirements of ISO 10545-11
FROST RESISTANCE	In compliance with the requirements of ISO 10545-12	In compliance with the requirements of ISO 10545-12	In compliance with the requirements of ISO 10545-12
STAIN RESISTANCE	Class 5 According to ISO 10545-14	Class 5 According to ISO 10545-14	Class 5 According to ISO 10545-14
CHEMICAL RESISTANCE	Class GLA According to ISO 10545-13	Class GLA According to ISO 10545-13	Class GLA According to ISO 10545-13
FRICTION COEFFICIENT	Min II In compliance with the requirements of ISO 10545-17	Min II In compliance with the requirements of ISO 10545-17	Min II In compliance with the requirements of ISO 10545-17
IMPACT RESISTANCE	Min 0.8 In compliance with the requirements of ISO 10545-5	-	Min 0.8 In compliance with the requirements of ISO 10545-5

TECHNICAL SPECIFICATIONS

WHITE BODY TILE SPECIFICATIONS (FIRST GRADE)					
SIZE 30X60 , 60X60 , 30X90 , 20X120 , 30X120 , 60X120 (Rectified)			SIZE 20X20 , 25X25 , 33X33 (Acid Resistant Non Rectified)		
LENGTH & WIDTH	30X60 , 60X60 , 30X90 , 20X120 , 30X120		60X120	20X20 , 25X25	33X33
	Max ±0.4 mm		Max ±0.5 mm	Max ±1.2 mm	Max ±0.9 mm
SURFACE FLATNESS	60X60 , 20X120 , 30X120 , 60X120	30X90	30X60	Max ±0.5 mm	Max ±0.7 mm
	Max ±0.5 mm	Max ±0.7 mm	Max ±0.9 mm		
STRAIGHTNESS OF SIDES	Max ±0.3 mm			Max ±0.4 mm	Max ±0.7 mm
THICKNESS	±4% of nominal thickness			±4% of nominal thickness	
RECTANGULARITY	Max 0.6 mm			Max 1 mm	
WATER ABSORPTION (Weight Percent)	Average ≤0.5%			Average ≤0.5%	
MODULUS OF RUPTURE (N/mm ²) (BENDING STRENGTH)	Average ≥35 Min. 32			Average ≥40 Min. 37	
ABRASION RESISTANCE	II-IV According to ISO 10545-7			II-IV According to ISO 10545-7	
THERMAL SHOCK RESISTANCE	In compliance with the requirements of ISO 10545-9			In compliance with the requirements of ISO 10545-9	
THERMAL EXPANSION COEFFICIENT (0-100°C)	Max. 5×10 ⁻⁶ (1/K)			Max. 5×10 ⁻⁶ (1/K)	
CRAZING RESISTANCE	In compliance with the requirements of ISO 10545-11			In compliance with the requirements of ISO 10545-11	
FROST RESISTANCE	In compliance with the requirements of ISO 10545-12			In compliance with the requirements of ISO 10545-12	
STAIN RESISTANCE	Class 5 According to ISO 10545-14			Class 5 According to ISO 10545-14	
CHEMICAL RESISTANCE	Class GLA According to ISO 10545-13			Class GLA According to ISO 10545-13	
FRICTION COEFFICIENT	Min II In compliance with the requirements of ISO 10545-17			Min II In compliance with the requirements of ISO 10545-17	
IMPACT RESISTANCE	Min 0.8 In compliance with the requirements of ISO 10545-5			Min 0.8 In compliance with the requirements of ISO 10545-5	
RESISTANCE TO CONCENTRATED ACID WEIGHT LOSS	-			≤0.3% According to ISIRI 3051	

Description	NORMAL TILE								
Size (cm)	20X20	30×30	39×39	60×60	30×90	20×120	30×120	60×120	60×120 (Polished)
Thickness (mm)	9±4%	8.2±4%	12±4%	10.7±4%	11±4%	11.4±4%	11.4±4%	11.4±4%	11.4±4%
Pieces/Carton	25	18	6	4	4	6	4	2	2
Quantity/Carton (m ²)	0.94	1.62	0.91	1.44	1.08	1.4	1.42	1.44	1.41
(Approx) Kg/Carton	20	30.24	24.8	34.5	26	35.5	35.5	36	36
Quantity/Pallet	75.2	87.48	58.24	51.84	69.12	67.2	68.16	69.12	67.68
Carton/Pallet	80	54	64	36	64	48	48	48	48
(Approx) Kg/Pallet	1615	1650	1602.2	1257	1679	1719	1719	1743	1743
Pallet Size (cm)	105×105	100X100	110×110	110×110	110×110	100×100	100X100	105×105	105×105

Description	NORMAL TILE		
Size (cm)	30×60 (Fixture)	30X60	31x61
Thickness (mm)	11±4%	9±4%	11±4%
Pieces/Carton	6	7	6
Quantity/Carton (m ²)	1.08	1.26	1.13
(Approx) Kg/Carton	23.3	21.6	23
Quantity/Pallet	77.76	90.72	81.36
Carton/Pallet	72	72	72
(Approx) Kg/Pallet	1692	1571	1671
Pallet Size (cm)	110×110	110×110	110×110

PACKING SPECIFICATIONS

Description	Acid Resistant Tile								
	20X20		25X25		33X33				30x30
	9 mm	12 mm	10 mm	11 mm	11 mm	11.8 mm	15 mm	12 mm (Alkali Resistant)	12 mm
Thickness (mm)	9±2%	11.7±2%	10.4±4%	11±4%	11±4%	11.8±4%	15±2.5%	12±4%	12±4%
Pieces/Carton	25	20	15	14	9	9	8	9	13
Quantity/Carton (m ²)	0.94	0.75	0.89	0.83	0.93	0.93	0.83	0.93	1.17
(Approx) Kg/Carton	20.8	21.2	21.5	20.1	23.3	23.3	28.2	23.3	30.8
Quantity/Pallet (m ²)	75.2	60	64.08	59.76	75.33	75.33	59.76	75.33	63.18
Carton/Pallet	80	80	72	72	81	81	72	81	54
(Approx) Kg/Pallet	1679	1711	1563	1462	1902.3	1902.3	2045.4	1902.3	1678
Pallet Size (cm)	105×105	105×105	110×110	110×110	105×105	105×105	110×110	105×105	105×105

To see the last packing and technical specifications, please visit our website : www.marjantileco.ir





MARJAN TILE

No.41, Kavian Alley, Chaharbagh Bala Ave., ISFAHAN-IRAN
P.O.BOX: 81655495 ◀ Tel: +98 31 36248019 ◀◀◀◀
www.marjantileco.com Email: info@marjantileco.com